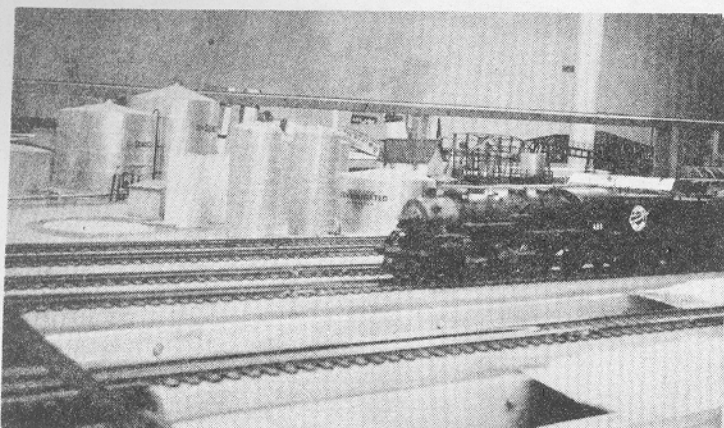


WEST ISLAND MODEL RAILROADERS INC.

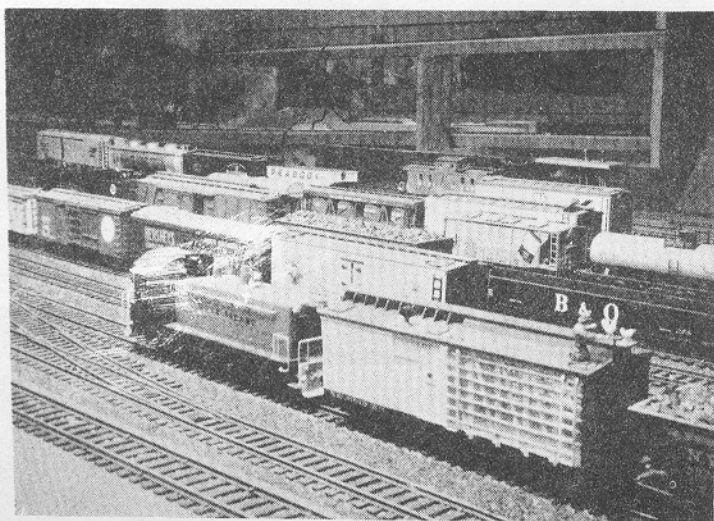
ORIGINAL
WEST ISLAND
LAYOUT

• HICKSVILLE, N. Y.

THE HOME OF LONG ISLAND'S BIGGEST LITTLE RAILROAD

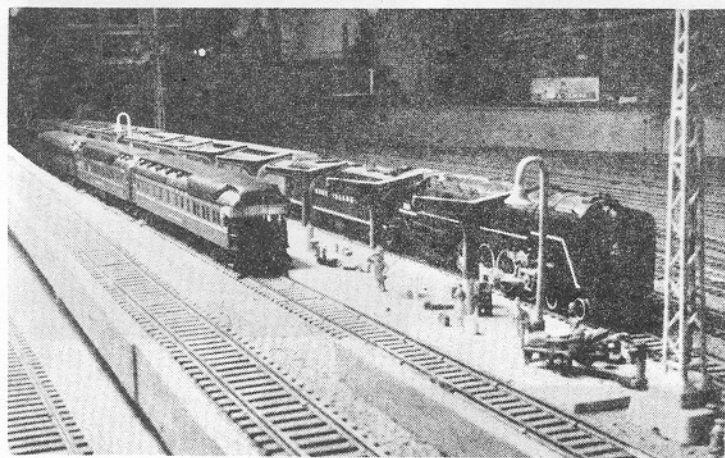
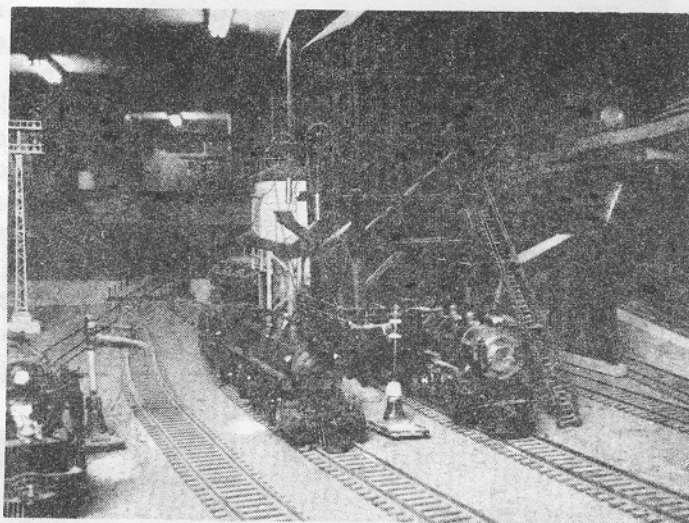


1. Welcome to the West Island RR. This photo album will highlight some of the features of our layout. By following the numbers of the pictures, you will actually be taken on a tour of the railroad. Photo number one depicts a steam loco passing near the oil refinery on the north bank of the Chenango River.



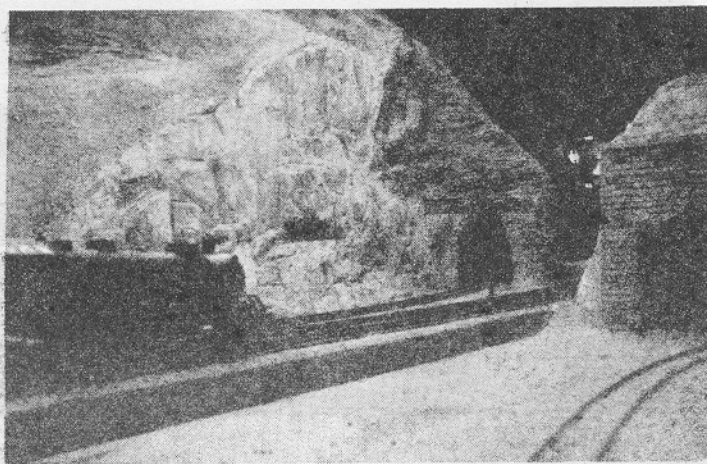
2. East Point Freight Yard. This yard can store up to approximately 250 freight cars. Outbound freights are assembled here on their way to all points of our 11' X 70' layout.

3. Engine Yard.
Will provide service and storage facilities for a combined total of about 65 diesel and steam locos.



4. Belleville.
Passenger station and storage yard for about 90 standard passenger cars. Watch out for that dashing commuter.

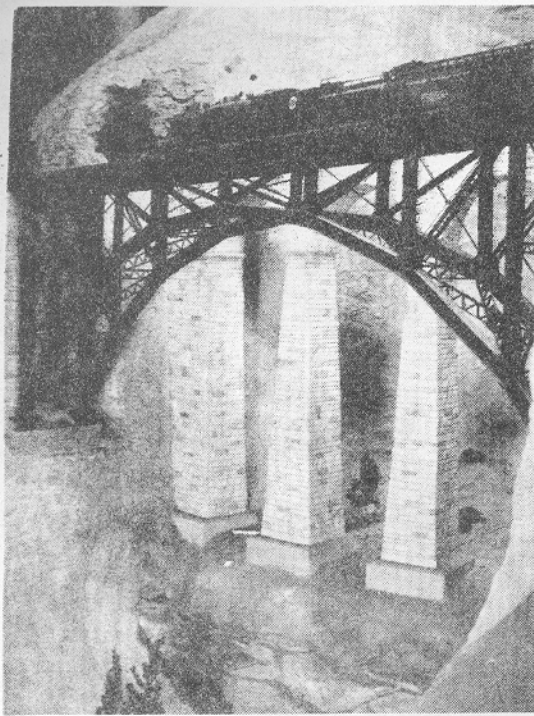
5. Narrow cut
through Rocky
Gap



6. Grand Gorge.

Spanned by a deck type steel arch bridge and a deck type stone arch bridge - both bridges scratchbuilt.

Note some of our lesser citizens gathering for their annual barbecue at the bottom of the gorge.

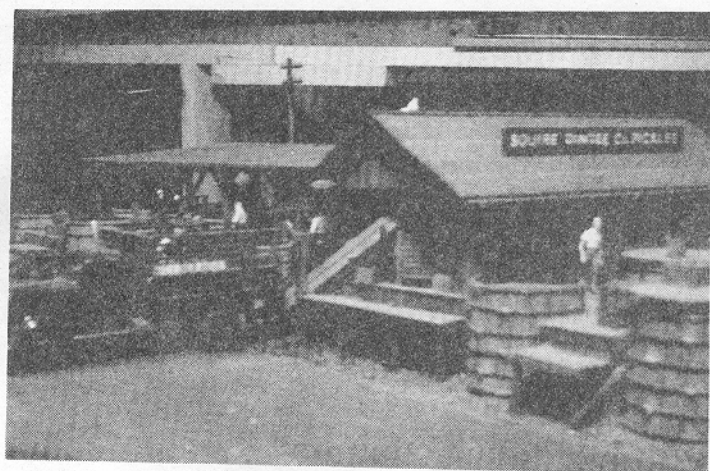
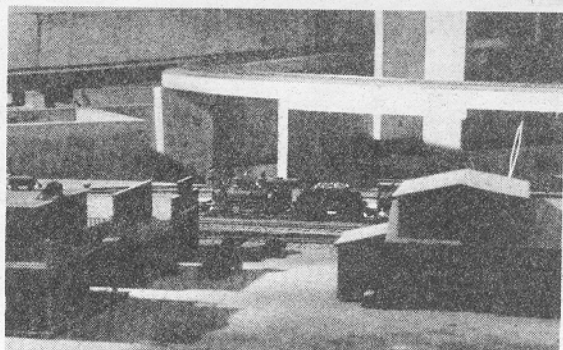


7. One of our members, Lou Boyd. Lou is Chief Engineer and master craftsman of our steel bridges. The above steel arch bridge is so well constructed that it can support the weight of an average man.



8. Overall view of Sun-lookin Mountain.

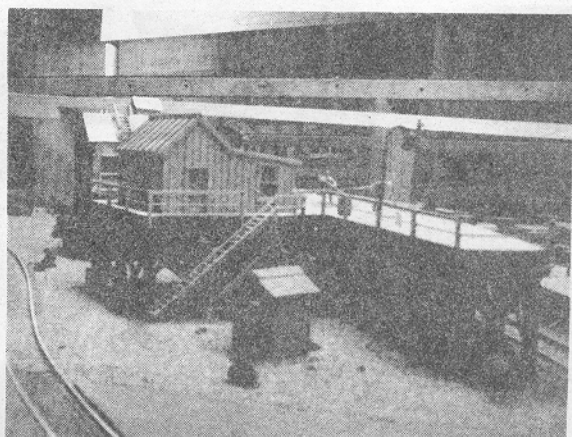
9. Iroquois Lumber Co. Warbonnet is the town located alongside the narrow gauge logging railroad. In the process of construction, the Iroquois will eventually interchange with the WIRR along the Chenango River.

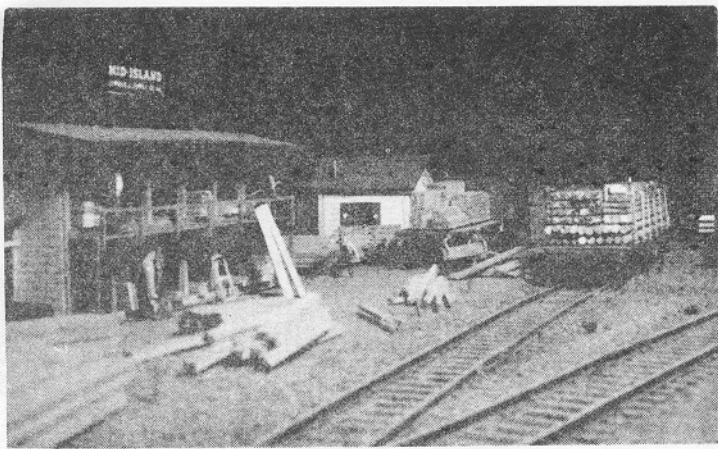


10. Squire Dingee Pickle Works. Can be located simply by standing to windward on a warm day.

11. Icing Platform. Here, the reefers are loaded with ice to help preserve the produce being shipped to market.

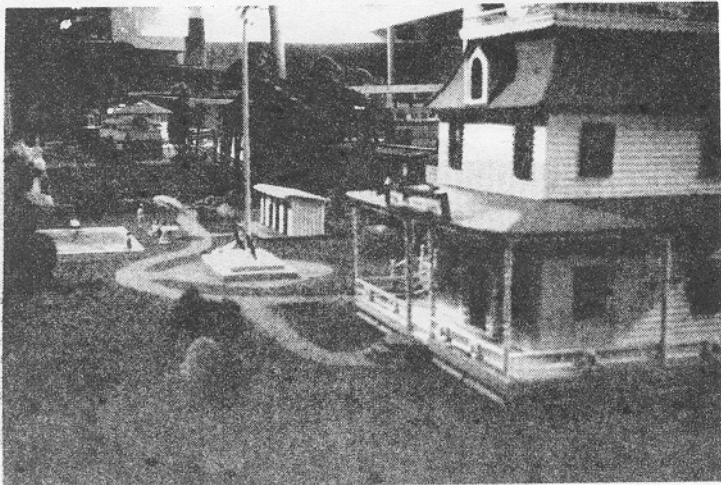
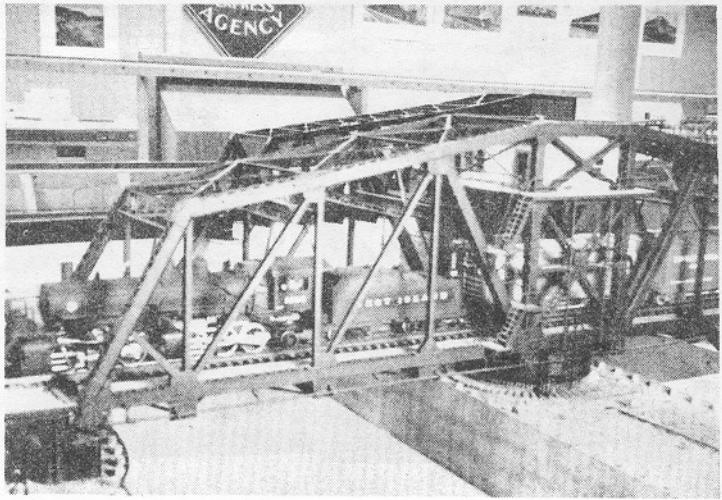
This cool weather does not melt the ice too quickly.





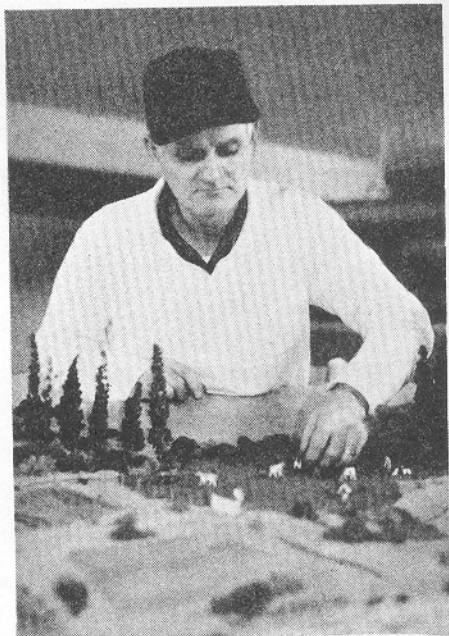
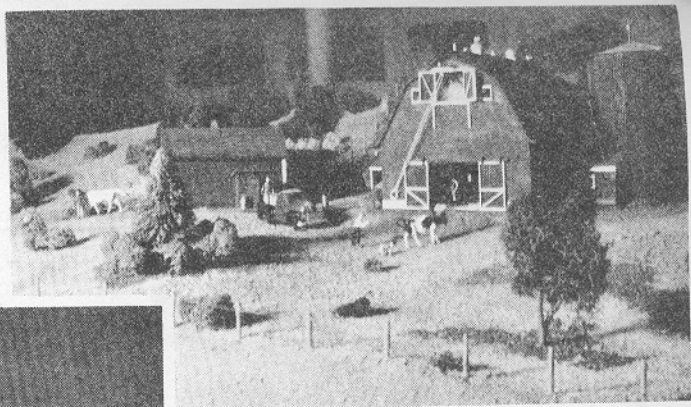
12. Mid-Island
Lumber and Sup-
ply Co.

13. Swing
Bridge.
Over 400 hrs.
required in
its construc-
tion.
Note the Roll-
ing Lift Bridge
in the Back-
ground.



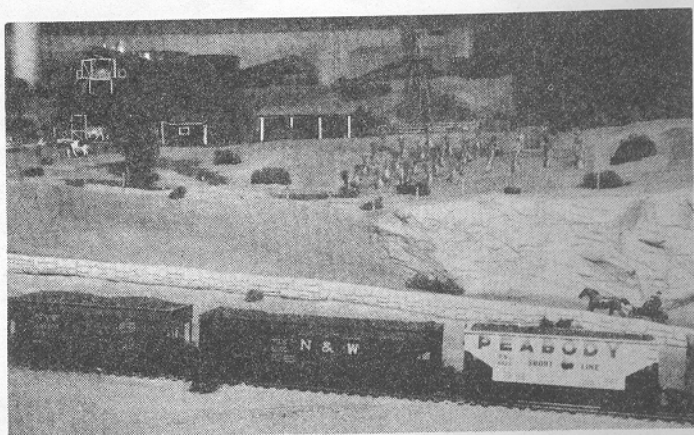
14. River Grove
Yacht Club.
How many people
can you find in
the pool?
Please do not
peek into the
bathhouse.

15. Dillon's Farm.



16. Jerry Ryan.
Jerry is Dean of our Scenery experts. Here he is shown putting the finishing touches on Mr. Dillon's farm.

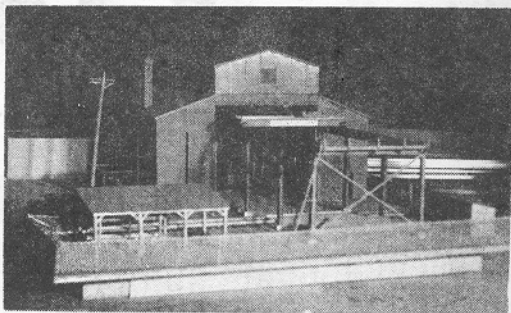
17. Farmer Dillon returns in his buckboard. How many barnyard animals can you locate on the farm?



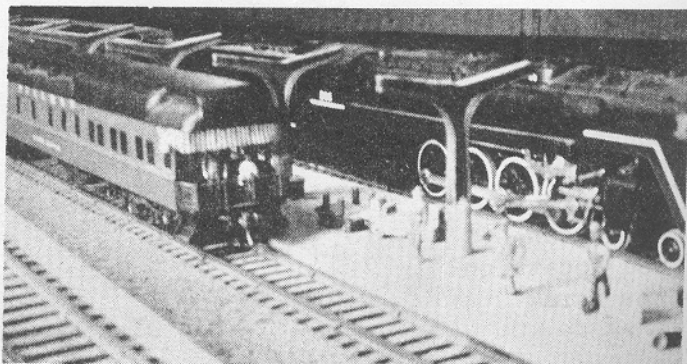


18. John Malenchek. John is shown examining one of the many switches. Altogether, he constructed the components of about 75 Mainline turn-outs.

19. Iron Works. Did you notice the superbly detailed steel mill on your tour around the railroad?



20. All Aboard! Thank you for giving us the opportunity to show you our Model Railroad



Empire. We hope you can visit the home of Long Island's Biggest Little Railroad again next year.

Owners and Operators, WIRR.